



# CA Data Protection Migration Program

Migrate to Connected Archive Supervision in Five Easy Steps

Proven, compliance-ready migration program provides safe and efficient migration from CA Data Protection to Connected Archive Supervision in 5 easy steps:

## 1 Preserve Supervisory Data and History

Explore 1:1 data mapping, translation of policies, and reconstruction for discovery in order to support migration decision-making.

## 2 Understand User Hierarchies

Reduce migration complexity by preserving roles, entitlements, and access privileges across user and reviewer hierarchies.

## 3 Assess Detection Policies

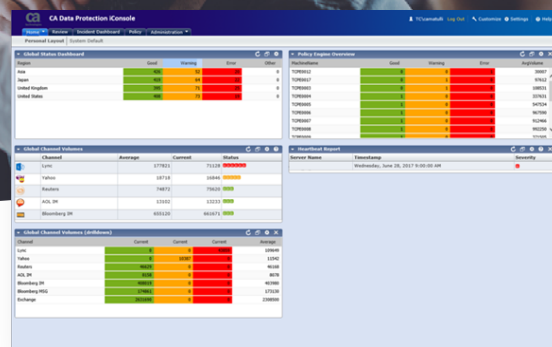
Review your policies for complexity, effectiveness, and false positive rates in order to plan for an updated policy library.

## 4 Examine Current Review Workflows

Inspect existing workflow reporting, review process, and actions regarding policy infractions to spot opportunities for improvement.

## 5 Evaluate Effectiveness of Reporting

Assess the current data extraction methods and reporting to help in the design of customized, visual reporting dashboards.



## Migrate to Connected Archive Supervision with ease.

As CA Data Protection approaches end-of-life, many firms are looking for a safe, cost effective approach to migrate – while also taking advantage of technology advances in addressing non-email content types, reporting, analytics, and cloud-based content storage. Our 5-step CA Data Protection Migration Program helps you meet these goals.

## Data discovery and migration health check.

Kick-start the migration process with an interactive workshop that includes a Health Check and review of your Data Migration, Identity Mapping, Policy Effectiveness, and Reporting processes. We deliver an Assessment Summary Report that helps guide the rest of your migration.

## Comprehensive training and annual service credits.

Let our team of CA Data Protection experts guide you through all aspects of user and administrative training to ensure your staff is equipped for a smooth migration.

We also provide annual service credits to partially off-set migration expenses. Our goal is to ensure the financial, process, personnel, and technology aspects of the migration are seamless and successfully managed from start to finish.

For the latest list of supported email channels, contact [1-866-762-7741](tel:1-866-762-7741) or visit [www.smarsh.com](http://www.smarsh.com).



[www.smarsh.com](http://www.smarsh.com)



@SmarshInc



SmarshInc



Company/Smarsh